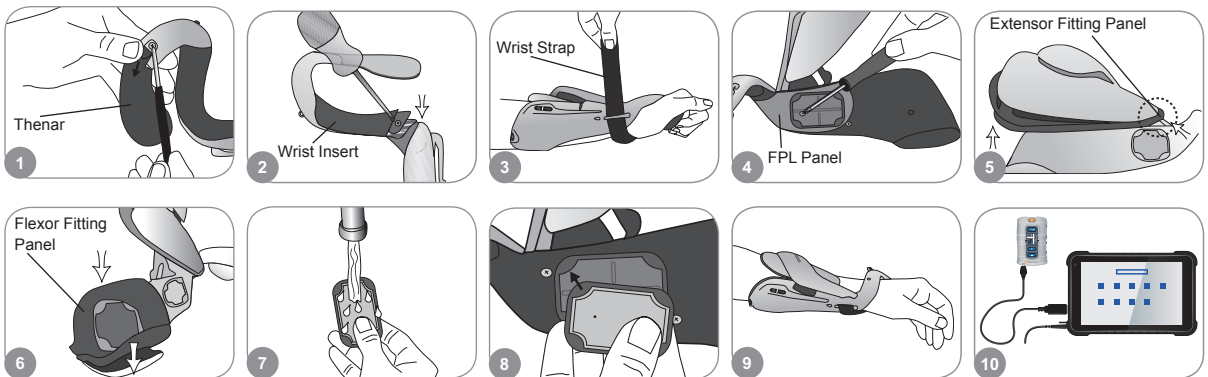


Fitting the H200 Wireless Orthosis

- 1 Select the appropriate Orthosis size and then attach the appropriate Thenar.
- 2 Attach the appropriate Wrist Insert.
- 3 Don the Orthosis and check between the FPL #5 electrode and the wrist. If there is a gap, attach and tighten the Orthosis Wrist Strap.
- 4 If there is still a gap, doff the Orthosis and attach the FPL Panel.
- 5 Select and attach an Extensor Fitting Panel that will elicit the desired hand/finger movement. Start with fitting panel A.
- 6 Select and attach a Flexor Fitting Panel that will elicit the desired hand/finger movement. Start with fitting panel A.
- 7 Wet all of the cloth electrodes.
- 8 Attach the cloth electrodes to the electrode bases.
- 9 Don the Orthosis.
- 10 Adjust stimulation parameters.



Adjusting Stimulation Parameters

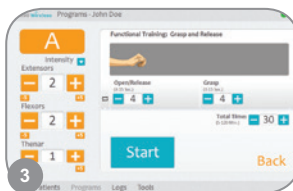
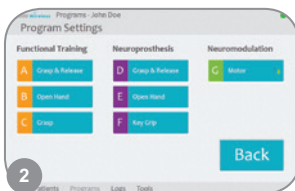
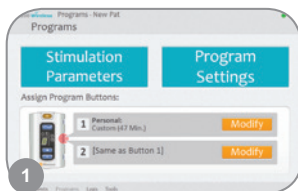
- 1 Log into the H200 Wireless Software. Select a patient record and press Open, or press New to create a patient record.
- 2 From the Programs Menu, press Stim. Parameters.
- 3 Adjust stimulation parameters for the extensors and flexors. Press Start to turn on stimulation. Press Stop to stop stimulation. Deactivate the trigger button on the Orthosis, if appropriate. Press Back to return to the Programs menu.



For a complete list of all contraindications, warnings, adverse reactions, precautions, and care instructions please review the Clinician's Guide found at www.bioness.com.

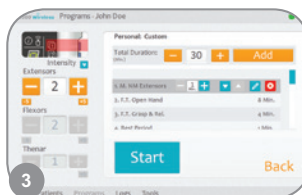
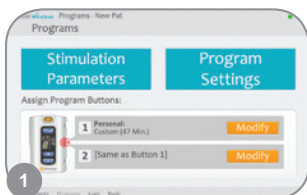
Adjusting Program Settings

- 1 From the Programs Menu, press Program Settings.
- 2 From the Program Settings window, select a program. The program window will open.
- 3 For Functional Training and Motor Neuromodulation Programs, adjust the program settings and press Start to turn on stimulation. Press Stop to turn off stimulation.
- 4 For Neuroprosthesis Programs, adjust the program settings and press Trigger to turn on stimulation. When ready, press Trigger a second time to initiate the next phase of the program. Press Stop to turn off stimulation.



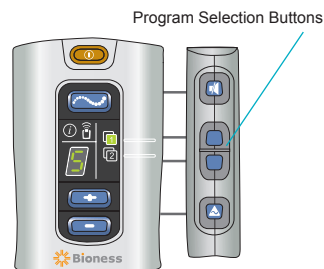
Assigning User Programs to Control Unit Buttons 1 and 2

- 1 From the Programs menu, press 1 Modify or 2 Modify to open the Assign to Button 1 or Assign to Button 2 window.
- 2 Select a program from the program list, press Edit to modify the program settings and/or press Back to assign the program.
- 3 To create and assign a Personal Custom Program, select Personal Custom and press Edit. Add, delete, edit, and/or reorder program segments as desired. Adjust segment duration and total duration, and then press Back.



Using Clinical Mode

- 1 Turn off the H200 Wireless Control Unit. Press and **hold** the Minus button. **Briefly** press the On/Off button. The stimulation intensity level and program letter "A" will alternate in the digital display.
- 2 Press the program selection buttons on the side of the Control Unit to select clinical programs A–G.
- 3 Press the Trigger button to turn on/off stimulation.
- 4 Press the On/Off button to exit clinical mode.



Bioness Inc.
25103 Rye Canyon Loop
Valencia, CA 91355 USA
Telephone: 800.211.9136 or 661.362.4850
Email: info@bioness.com
Website: www.bioness.com

EC REP

Bioness Europe B.V.
Stationsweg 41
3331 LR Zwijndrecht, The Netherlands
Telephone: +31.78.625.6088
Email: international@nl.bioness.com
Website: www.bioness.com



CE
0086

Rx Only (US Only)